

Pressure Gauge Syphons

DIN 16 283 or industrial standard

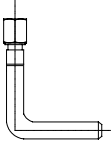

Application

Pressure gauge syphons are intended to protect the pressure gauge from the effect of hot pressure media and also to reduce the effect of rapid pressure surges.

Material

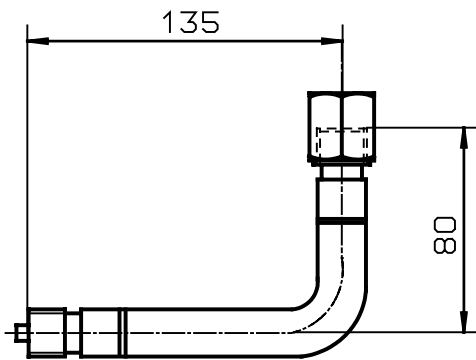
Carbon steel (St 33 or St 35.8)
Stainless steel (1.4571)



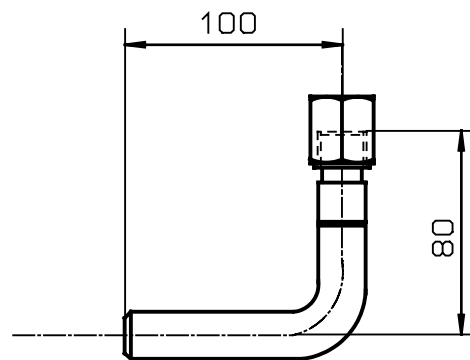
Design	Connection	Material	Max.PN in bar	Max. Temp. °C	Form	Article no.
	Angle-Form , with connecting sleeve x male 1/2" Form A Angle-Form , connecting sleeve with entry butt welding Form B					
	G 1/2	St 35.8	100	120 °C	A	ZW 612
		St 35.8			B	ZW 612
		stainless steel	80	300 °C	A	ZW 613
		stainless steel	63	400 °C	B	ZW 613
	Straight form , with connecting sleeve x male thread 1/2" Form A Straight form with connecting sleeve entry butt welding Form B					
	G 1/2	St 35.8	100	120 °C	A	ZW 512
		St 35.8			B	ZW 512
		stainless steel	80	300 °C	A	ZW 513
		stainless steel	63	400 °C	B	ZW 513

Dimensions

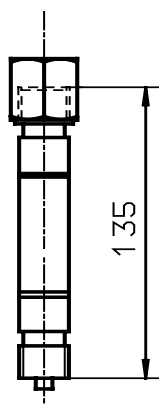
Form A



Form B



Form A



Form B

