

# Pressure Gauge Syphons

DIN 16 282 or industrial standard



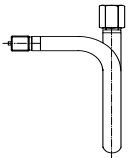
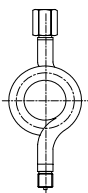
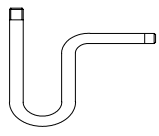
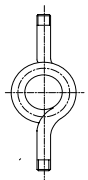
## Application

Pressure gauge syphons are intended to protect the pressure gauge from the effect of hot pressure media and also to reduce the effect of rapid pressure surges.

## Material

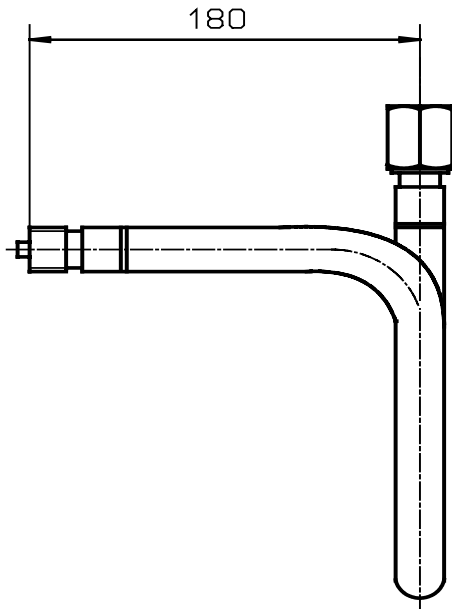
Carbon steel ( St 33 or St 35.8 )

Stainless steel ( 1.4571)

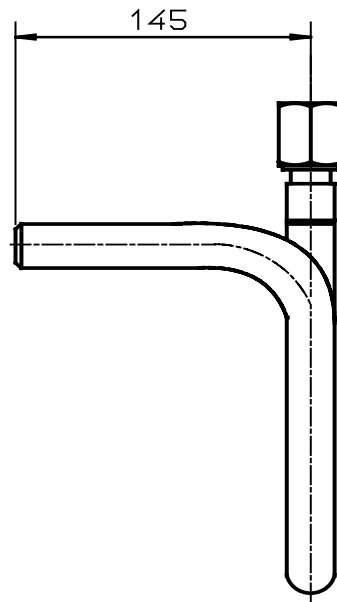
Design	Connection	Material	Max.PN in bar	Max. Temp. °C	Form	Article no.	
	<b>U-Form A, with connecting thread 1/2"</b> <b>U-Form B, with entry butt welding</b>						
	G 1/2	St 35.8	100	120 °C	A	ZW 102	
		stainless steel			80	300 °C	B
					400 °C	A	ZW 103
						B	ZW 113
	<b>Trumpet form , with connecting thread 1/2"</b> <b>Trumpet form with , entry butt welding</b>						
	G 1/2	St 35.8	100	120 °C	C	ZW 202	
		stainless steel			80	300 °C	D
					400 °C	C	ZW 203
						D	ZW 213
	<b>U-Form,without sealingthread</b>						
	G 1/2	St 33	25			ZW 302	
	<b>Trumpet form , without sealingthread</b>						
	G 1/2	St 33	25			ZW 402	

## Dimensions

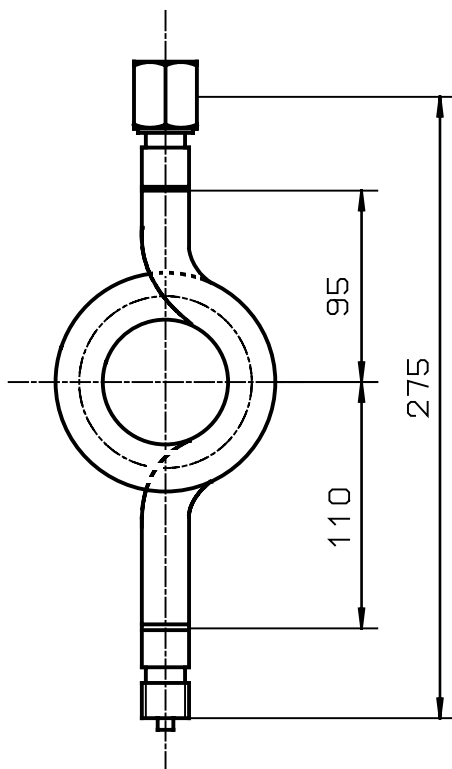
**Form A**



**Form B**



**Form C**



**Form D**

