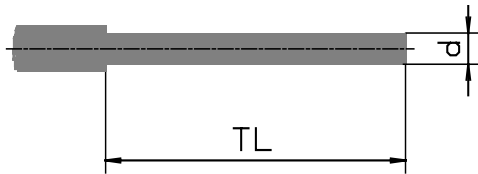
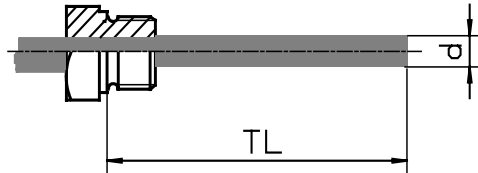


## Stem types for Gas thermometers with fixed stem connection



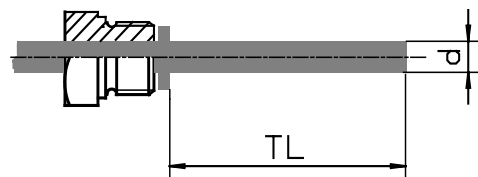
**Stem type F1**  
plain stem without thread



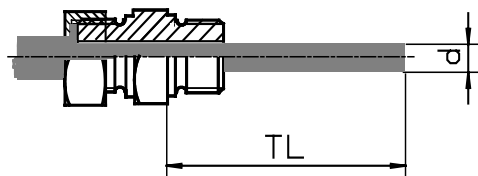
**Stem type F2**  
fixed thread connection



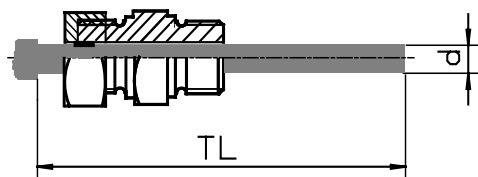
**Stem type F4**  
union nut



**Stem type F5**  
rotating thread  
only with extra thermowell



**Stem type F6**  
union nut with rotating thread



**Stem type F7**  
plain stem, smooth with clamping nut

Stem type	Minimum Stem length TL								
	F1, F5			F4, F4-1, F6, F7-1			F7		
Stem diameter	12	10	8	12	10	8	12	10	8
Temperature range									
<500°C	40	50	80	50	60	90	70	80	105
>500 °C	80	110	170	90	120	180	110	145	195